

# IMPACT REPORT

Helping Delaware's children and families thrive.



Home-visiting supports for pregnant moms helped

## 155

babies be born healthy.



Foster Care helped

## 65%

of kids leaving our care get the lifelong stability they need through reunification with their birth families or adoption.



## 242

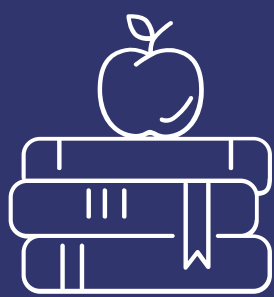
families stayed together and grew stronger with the help of Family Assessment & Intervention Response Case Management.



Students and families in

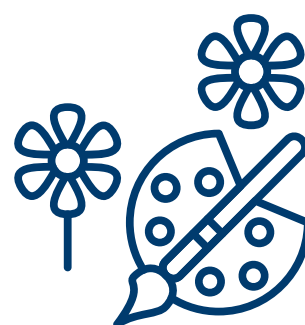
## 31

public and charter middle schools were able to get free mental health from Behavioral Health Consultants.



## 973

Students, in grades K through 5, were engaged and ready to learn with the help of individualized supports from Community Schools.



Seaford Community of Hope hosted

## 312

activities to help families get the supports and resources they needed.



## 2,790

people received assistance in their search for quality, licensed child care.



## 78%

of Seaford House youth participated in extracurricular activities, including clubs, sports, or a job.